



Finance, Audit, Insurance, and Real Property
Committee

Next Steps on the Climate Adaptation Master Plan for Water

Item 9-3

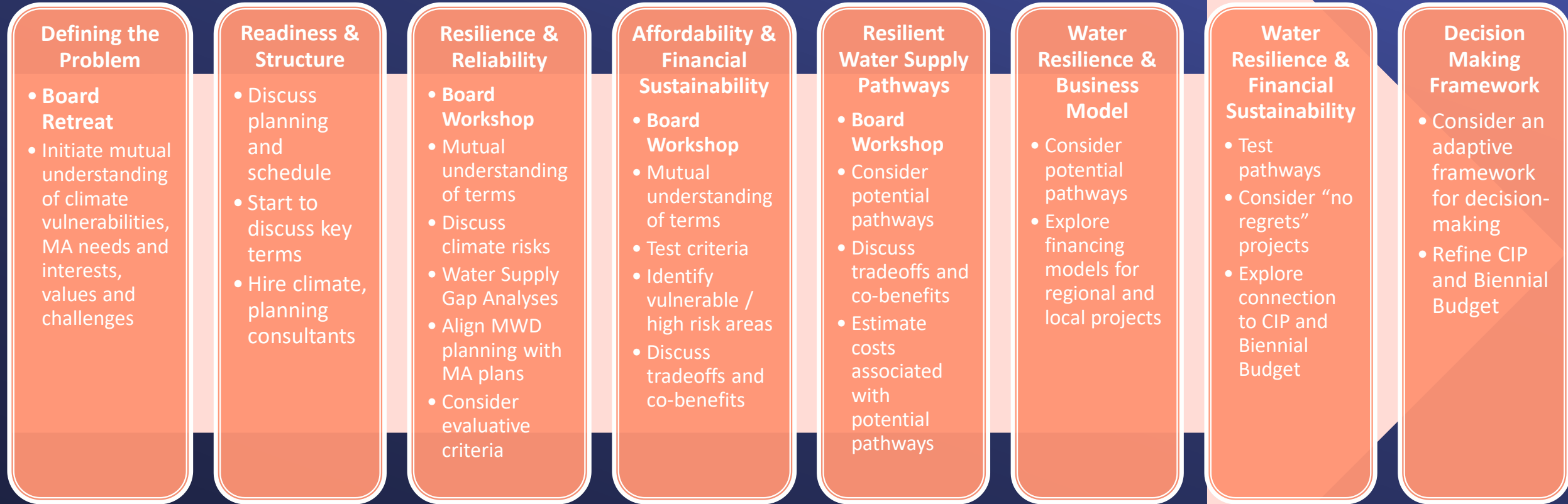
April 11, 2023

Potential Upcoming Board Policy Decisions

Climate Adaptation
Master Plan for Water
(CAMP4W)

- 1) Develop mutual understanding of key terms and outline goals and potential impacts for Metropolitan and Member Agencies related to:
 - Resilience, Reliability, Financial Sustainability, Affordability
- 2) Develop evaluative criteria to measure climate resilient strategies for:
 - Local and regional water supply and conveyance projects
 - Storage development inside and outside service area
 - Investments in imported water supply
 - Demand management and conservation programs
- 3) Identify potential pathways for future investment to meet resilience, reliability, financial sustainability and affordability goals and objectives and evaluate against criteria
- 4) Evaluate organizational needs for meeting goals and objectives including:
 - Business model options
 - Financing and rate structures
 - Workforce development

Potential Climate Adaptation Master Planning Process



Member Agency and Public Engagement

DRAFT
Board Committee
Reporting
Structure

BOARD OF DIRECTORS
Final Approvals • Focused Workshops

Other Committees

EOT: SWPDA projects, PWSC, CIP discussions, power supply
EOP: Ethical decision making
EIA: Affordability, Equity

LTPPB
Process/Schedules
Assignments &
Reporting

OWS

Climate Vulnerability and Risk
Evaluative Criteria
Resilient Water Supply Pathways
Demand Management & Conservation

FAIRP

Process/Schedules
Business Model
Financing Plan
Rates Review

Upcoming Board Workshops

Climate Adaptation
Master Plan for Water
(CAMP4W)

Tuesday, May 23rd

Dialogue focused on:

- Communicating interests and needs
- Key terms: Resilience, Reliability, Financial Sustainability, Affordability

Tuesday, June 27th

Dialogue focused on:

- Member Agency Needs Assessment
- Gaps Identification
- Alignment of Member Agency and Met planning

Workshop #1: Key Terms

May 23, 2023

- Address the following:
 - Resilience
 - Reliability
 - Affordability
 - Financial Sustainability
- Metropolitan Staff will address the following questions:
 - How does Metropolitan define these terms now?
 - How are they used in practice?
 - How do evolving climate conditions impact our understanding of those terms?
 - What initial ideas does Met staff have for further developing our understanding?
- Prior to May 23 workshop, Member Agencies will be asked for input and their own definitions and practices

