



Authorize Permanent Easement

Real Property & Asset Management Committee

Item 7-7

February 13, 2018

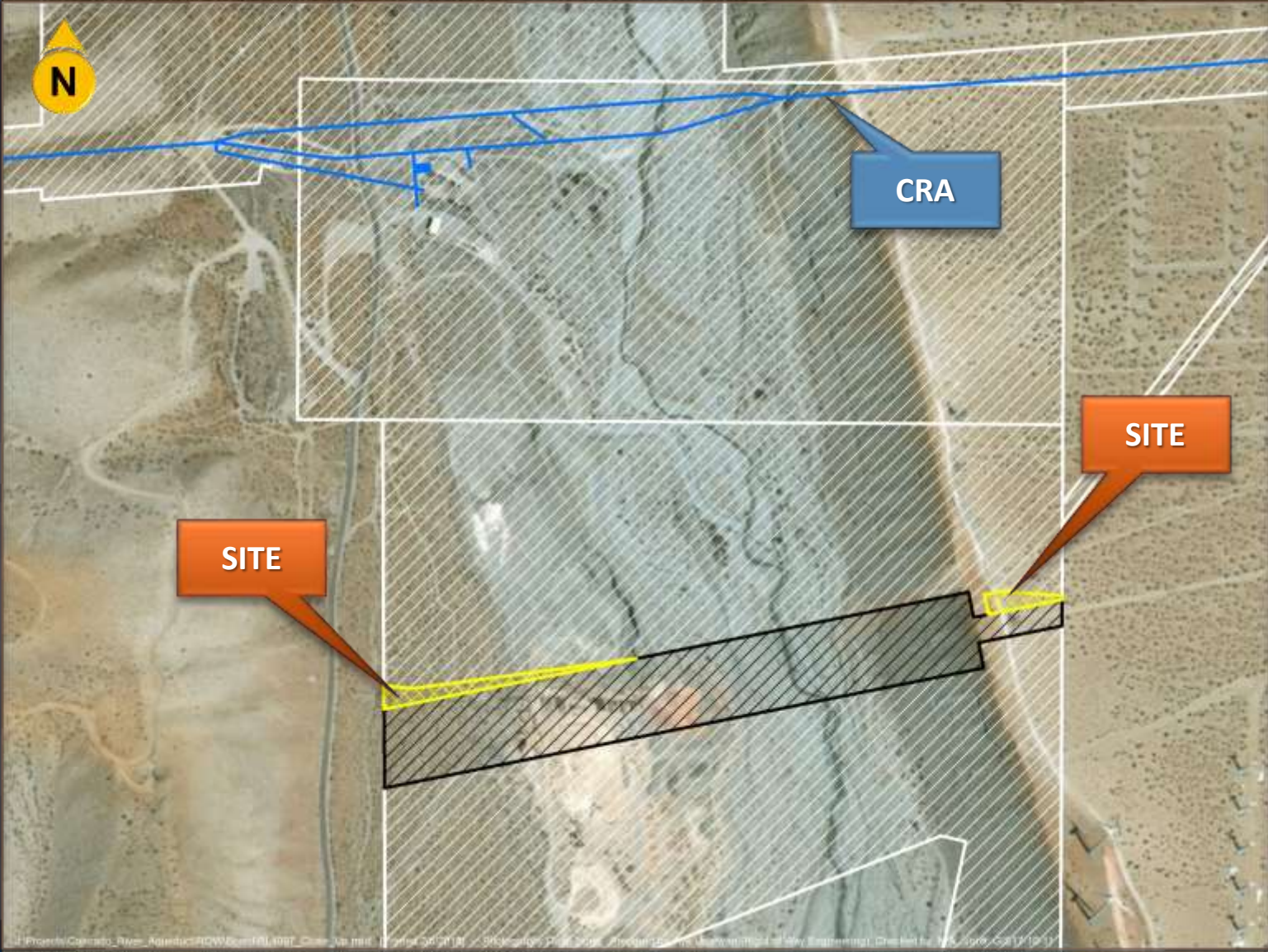
Distribution System Map - CRA



General Location Map



Site Map - SCE



Permanent Easement Provisions

- Grant Permanent Easement to SCE
- Total of approximately 1.15 acres
- One-time processing fee of \$2,000
- Easement has a FMV of \$1,500
- Metropolitan's paramount rights retained

Board Options

- Option #1
 - Adopt the CEQA determination that the proposed action is categorically exempt, and
 - Authorize the General Manager to grant a permanent easement to SCE
- Option #2
 - Do not approve

Staff Recommendation

- Option #1

