



# Omega Chemical Corporation Superfund Site

Legal and Claims Committee (Open)

Item 7-8

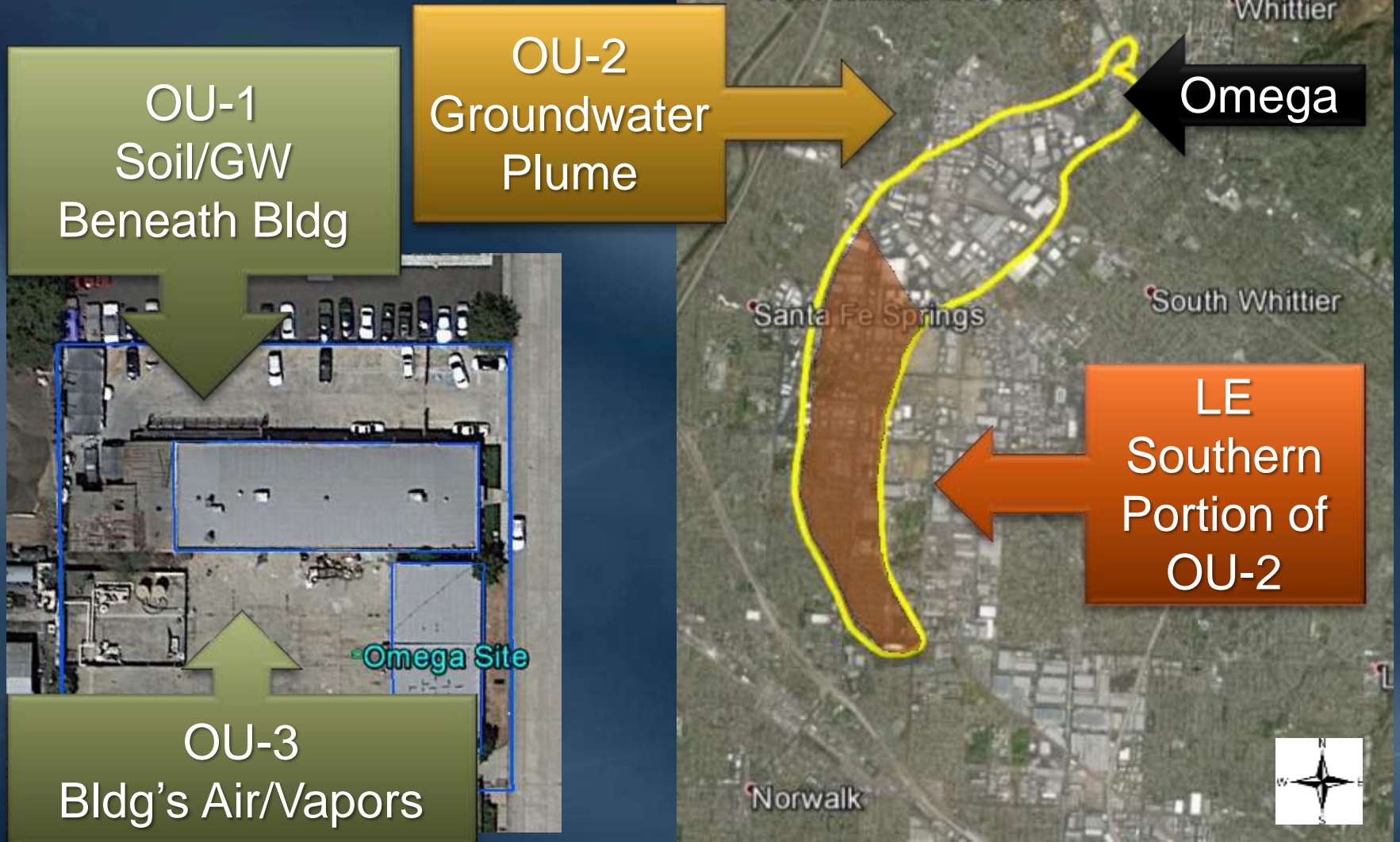
February 13, 2018

# Discussion

- Open Session:
  - History & Background
- Closed Session:
  - Discuss the terms of the settlement

# Omega Chemical Superfund Site

## Location



# Timeline

1976 - 1991

Omega in operation

1989 - 1991

MWD ships waste

1995

EPA Orders Cleanup

~170 PRPs

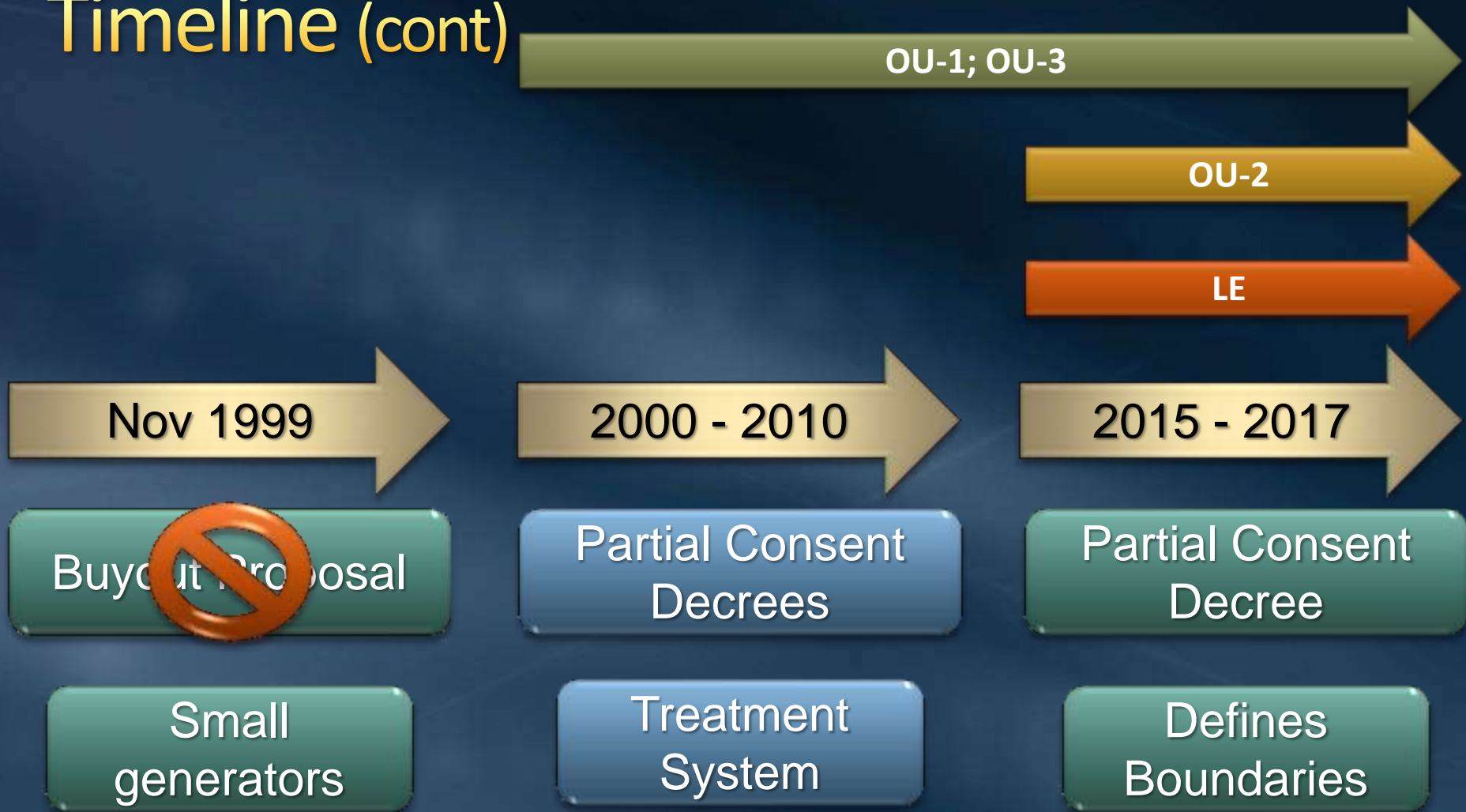
MWD joins OPOG

1999

Named Superfund Site

EPA Enforcement

# Timeline (cont)



# Timeline (cont)

OU-1; OU-3

OU-2

Leading Edge

2018 - ?

Settlement Offer

22 years in OPOG

< 0.25% liability

**CLOSED SESSION**