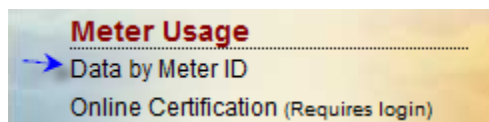


## Processing the New Meter Usage Link

The WAMI (Water and Meter Information) link has undergone an upgrade. You can now access the link from the MWD website under meter usage heading.



Click on the **Data by Meter ID** link and it will log you into the WINS system as a report user.

## Meter Usage Reports



After the page loads - Select Reports > Meter Usage Reports from the menu. This will load all of the reports available from this menu option. To run a report click on the Report Name from the list of available reports.

### Meter Usage Reports

REPORT	DESCRIPTION
<a href="#">Interval Flow Reading (Calculated Flow)</a>	Calculated Meter Flows in cfs for each interval
<a href="#">Interval Flow Reading (Actual Flow)</a>	Actual Meter Flows in cfs for each interval
<a href="#">Meter Reading for Last Interval</a>	Meter Reading Info for last interval of each day
<a href="#">Meter Reading Details</a>	Meter Reading Detail with 96 Intervals for each day
<a href="#">Summary Hi/Low/Avg Daily Flows</a>	Summary of Daily Flows and Volumes for a Data Range
<a href="#">Summary Volumes</a>	Summary of Daily Flow Volumes based on end of day values
<a href="#">Summary of Meter Readings</a>	Beginning and End Meter Readings for a Data Range

## Report Parameter Screen

Reports may request additional information in order to process. Depending on the report this page will have one or many items to select from. Some of the most common filters are:

### Agency Filter

You can select a Member Agency from the list. This is usually done to assist the user in limiting the amount of meters to choose from.

The screenshot shows a report configuration window with the following details:

- Report Name:** Interval Flow Reading (Calculated Flow)
- Description:** Calculated Meter Flows in cfs for each interval
- Current Period:** 200904
- Report ID:** WR00071.RPT

Below this information are three filter sections:


- Agency Information Required:** A dropdown menu labeled "Member:" is set to "Long Beach".
- Meter Information Required:** A dropdown menu labeled "Meter:" is set to "All". A list of meter options is displayed, including "All", "LB-01", "LB-01A", "LB-01B", "LB-01C", "LB-02", "LB-03", "LB-04" (highlighted with a mouse cursor), "LB-05", "LB-06", "LB-07", "LB-07A", "LB-08", "LB-09", "LB-RCL1", and "LB-RCL2".
- Date Range Information is Required:** Fields for "Start Date:" and "End Date:" are present but empty.

A "Return to" button is located at the bottom left of the form area.

### Meter Filter

You can select the meter connection identification from this list. If you would like to view all meters for a particular agency, make sure the agency name is selected first and then select the word "All" from this list.

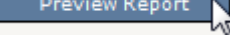
### Date Range Filter

You can limit the amount of data by selecting the date range. Select the date you wish to use as the **Start Date** and if prompted the **End Date**. To select a date click on the  calendar icon

The screenshot shows the date range filter section with the following details:

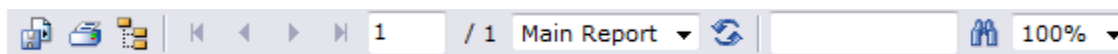
- Start Date:** 4/1/2009. A calendar icon is visible to the right of the input field.
- Low limit date of entries:** This text is positioned below the start date field.
- End Date:** 4/8/2009. A calendar icon is visible to the right of the input field.
- High limit date of entries:** This text is positioned below the end date field.


## Submit Request

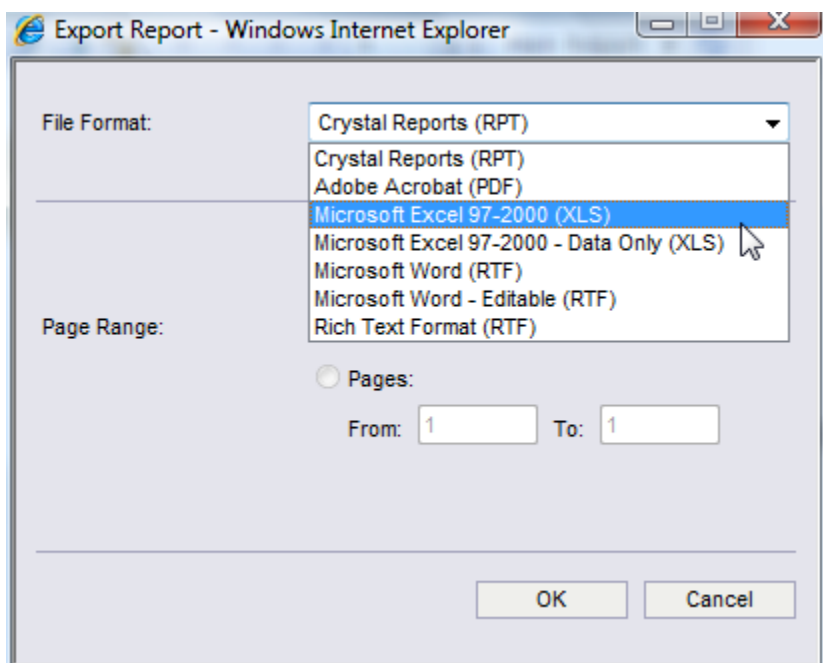
After you have supplied all the required parameters, click on the  button to run the report

## Exporting Report Data


When you are previewing the data online, you may want to export this data to a variety of formats. Notice at the top of the report is a report toolbar. The first option is the export button.



Click on the first icon  to open the export window and select the format from the list. Click on ok and you will be prompted to save the file on your computer. Provide a file name and save the file.

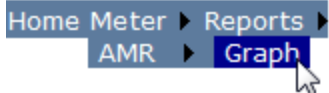


## Printing Report Data

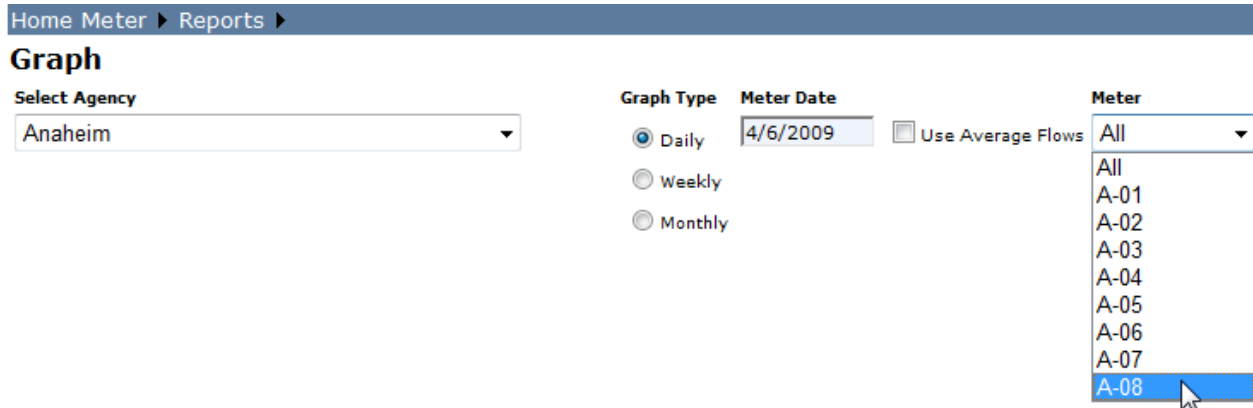
To print, select the second icon  from the toolbar. Metropolitan uses crystal reports activeX print control to load the default list of printers associated with your computer. Select the printer of choice and then select print. If you see a blank window appear instead of your printer list, this usually means that the control is blocked by your organization's security policy. A work around is to export the report to another format (.pdf for example) and then print the report from this format or have your IT security staff member contact [fmilton@mwdh2o.com](mailto:fmilton@mwdh2o.com) to work out a security solution.

### Meter Graph Report

The meter graph report is located under the **Meter** menu option. Select Meter > AMR > Graph

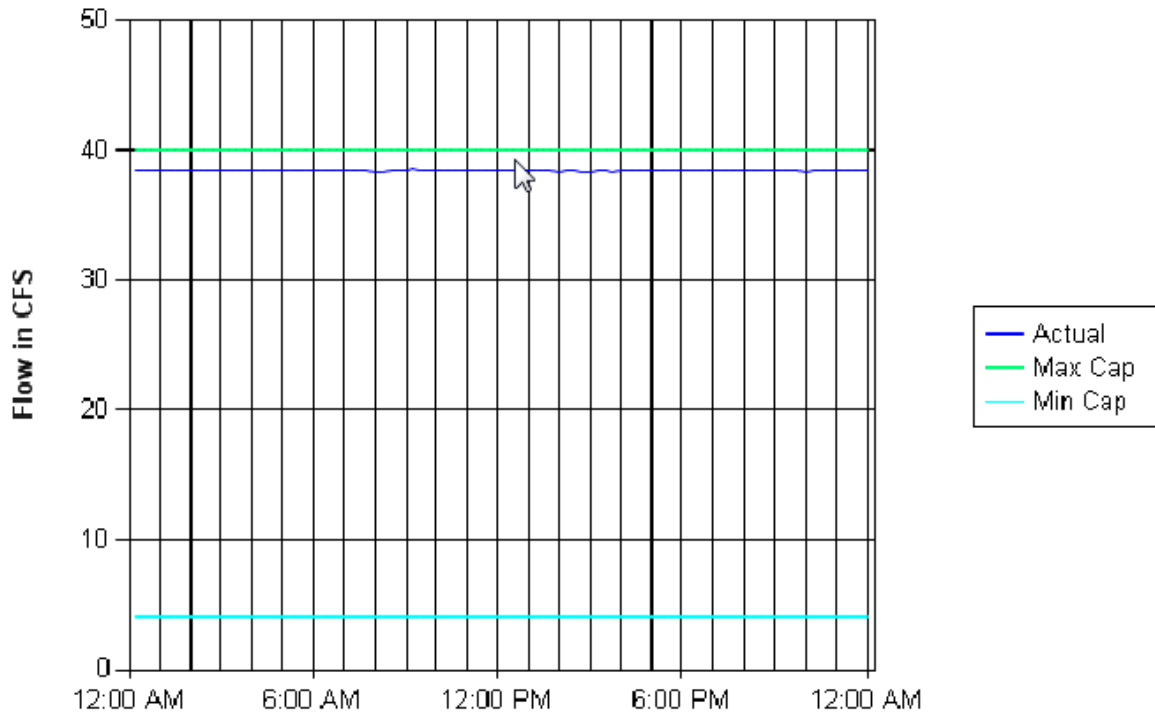


The Graph page will load. Select the Agency from the list, the graph type, meter date and a single meter or all meters and click on update graph. The graph will be displayed with data for the selected information.



At this time, you can see the individual 96 intervals for the daily graph by selecting view data. This option is not available for weekly and monthly. To print the graph, select the print button on the page next to the meter list box.

METER_DATE	INTVL_NUM	MAXCAP	MINCAP	FLOW
4/6/2009 12:15:00 AM	1	40	4	38.51
4/6/2009 12:30:00 AM	2	40	4	38.49
4/6/2009 12:45:00 AM	3	40	4	38.53
4/6/2009 1:00:00 AM	4	40	4	38.49
4/6/2009 1:15:00 AM	5	40	4	38.49
4/6/2009 1:30:00 AM	6	40	4	38.43
4/6/2009 1:45:00 AM	7	40	4	38.51

**Daily Flow for Meter:A-08, Reading 59993434 - 60026647****Time of Day (4/6/2009)**

Graph types are as follows

**Daily**

Retrieves 96 intervals for the selected meter and date.

**Weekly**

Retrieves all 96 intervals for 6 consecutive days up to the date selected in the meter date box. The date selected will be the last day in your selection

**Monthly**

Runs all 96 intervals for the month where the selected date falls in.

**Note:**

The use average flows option will average the intervals for every 15minutes for the selected date and graph type instead of the actual cfs.